

SAFETY PRODUCTS



Innovation for Customers



- The information in this brochure is effective as of June 2020.
- This brochure features products sold in Japan. Please visit Nitto's website for information on sales of products in other countries.
- The contents of this brochure are subject to change without notice.
- The figures given in the brochure are observed values only and are not guaranteed.
- The applications given herein are suggested examples. Make sure the product is capable of the application before actually attempting to put it to use.
- The contents of this brochure (including text, graphics, data and other content) are the intellectual property of Nitto Denko Corporation.
- All logos, product names and other relative names are trademarks and registered trademarks of the Company and their respective companies in Japan or other countries.
- This document may not be copied or reprinted. We ask that you contact us through our website before using the contents for any purpose other than for which they are intended.

Nitto Denko Corporation

26th Fl., Shinagawa Season Terrace, 1-2-70, Konan, Minato-ku, Tokyo 108-0075, Japan

TEL: +81-3-6632-2101 FAX: +81-3-6632-2025 <https://www.nitto.com/jp/en/>

CATALOG CODE: 18502 Issued in June 2020

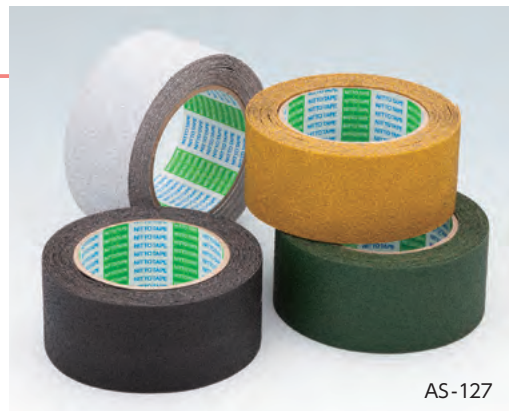


1505F10 ©
2006R02

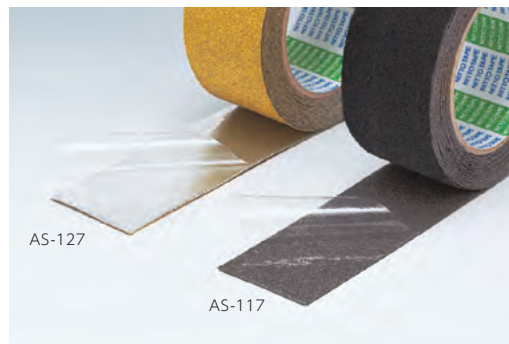
ANTI-SKID TAPE

ANTI-SKID TAPE [AS-117, AS-127]

Anti-skid tapes are designed for the purpose of slip prevention in areas with slippery steps or slopes, as well as high risk workplaces. There are two options: AS-117 for flat surfaces and AS-127 for uneven surfaces.



AS-127

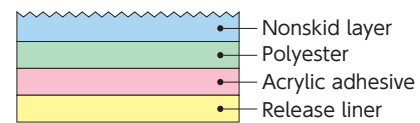


AS-127

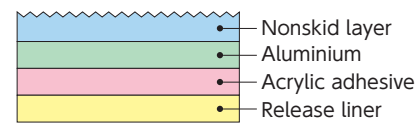
AS-117

Structure

AS-117



AS-127



Specifications

AS-117

Thickness(mm)	Width(mm)× Length(m)	Qty/Cs(rls)	Colors
1.0	50 × 5	12	Black
	100 × 5	6	
	400 × 5	2	

AS-127

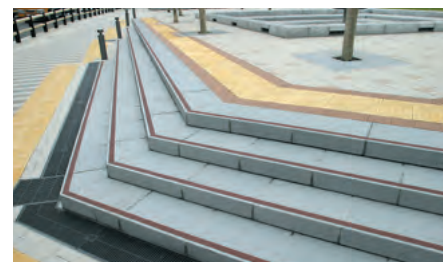
Thickness(mm)	Width(mm)× Length(m)	Qty/Cs(rls)	Colors
1.0	50 × 5	12	Green,Black, Yellow,White
	100 × 5	6	
	150 × 5	6	
	400 × 5	2	

General characteristics

Product No.		AS-117	AS-127
Item	Unit		
180° peeling force (For stainless plate)	N/20mm	18.00	18.00
Tensile strength	N/20mm	150	150

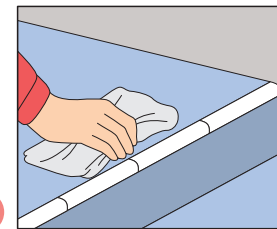
Application example

For skid prevention on steps and ramps in factories, stations, and various facilities



Construction method

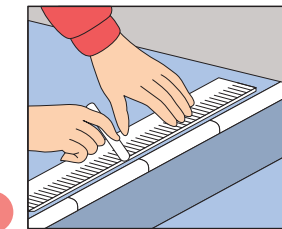
Foundation layer adjustment



1

Make the target surface flat and thoroughly remove moisture, oil and dust. Additionally, use a commercially available primer when the tape is applied to targets with many uneven surfaces or those located in crowded places.

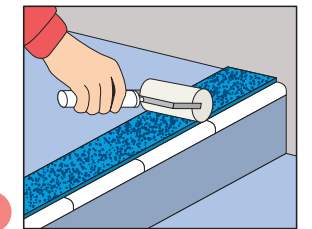
Positioning



2

When a target floor has a wide area, mark required positions with chalk first and then cut the tape to prepare the necessary amount.

Taping



3

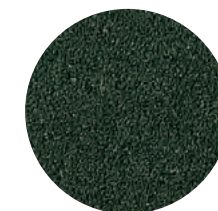
Place a piece of tape on the surface of the target area, making sure that the surface is not warped. Peel the release liner from one end, apply the tape, and strongly press the tape with a roller or a rubber hammer.

Do not use scissors to cut the tape since the blade may chip off. Instead, use a cutting knife to cut the film (AS-117) or the aluminum layer (AS-127) on the reverse side and break the tape off.

For more effective use

- When the tape is applied to concrete surfaces, use a commercially available chloroprene rubber primer.
- To ensure stable adhesion, cut the four corners of the tape so that they are round.

Color sample



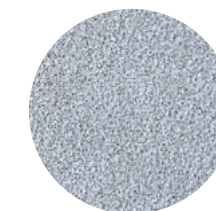
Green



Black



Yellow



White

Handling and storage precautions

- Before using the product, thoroughly wipe off dust, oil and moisture from the surface where the tape is to be applied.
- Avoid using the tape at low temperature since high adhesion is not exhibited at low temperature.
- To ensure stable adhesion, apply appropriate pressure to the tape to make it adhere to the adherend securely.
- Some adhesive may remain on the adherend, or tape-pasted surfaces on an adherend may become discolored or damaged. Thus, check for the presence of these problems before use.
- Store the product in a cool location out of direct sunlight.
- Take care when lubricant substances are stuck to product surfaces, such as soap or oil, as they are very slippery.